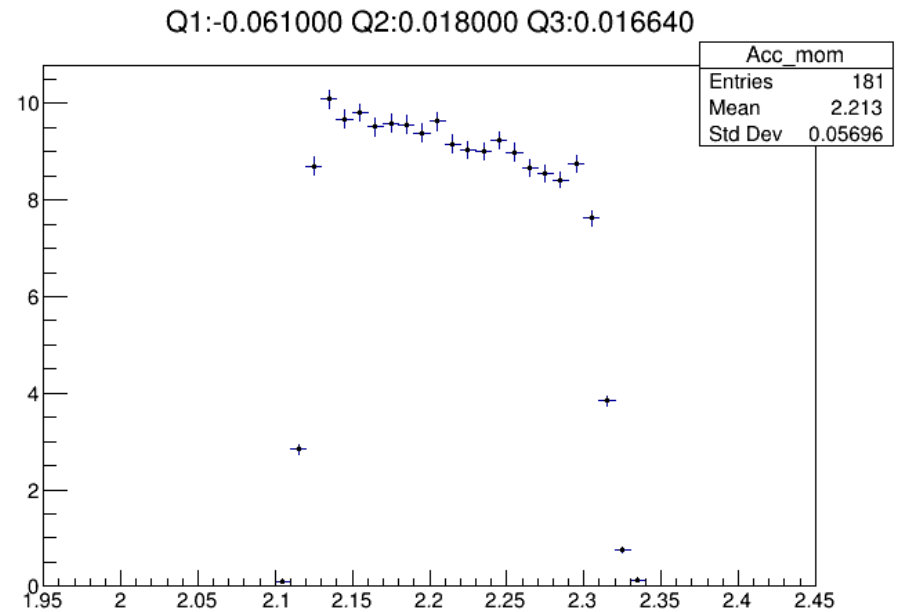
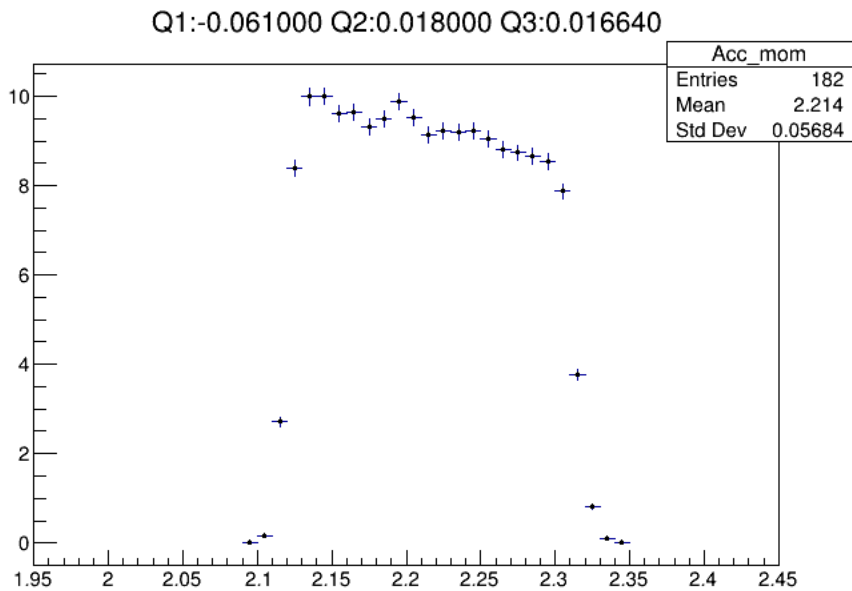


2019.10.13

S2

- S2 was incorporated in geant4 simulation
- Variation of acceptance is very small.



E70TS

pol9 fit

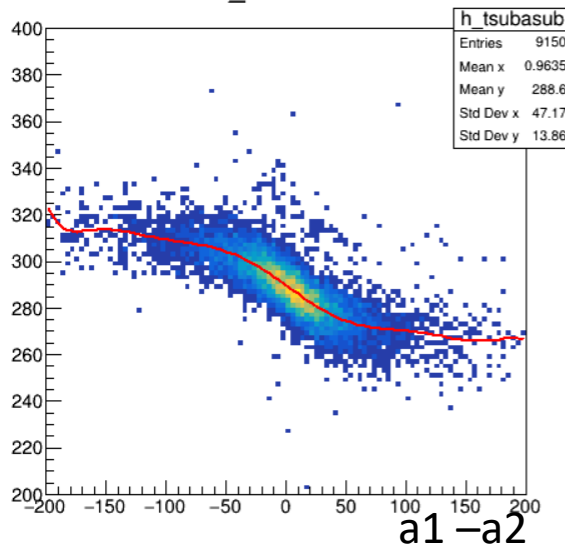
```
Minimizer is Linear
Chi2      = 121161
NDF       = 1189
p0        = 289.756 +/- 0.315317
p1        = -0.352538 +/- 0.0152126
p2        = 0.000220631 +/- 0.00032465
p3        = 3.34236e-05 +/- 6.68736e-06
p4        = -1.64432e-08 +/- 5.69835e-08
p5        = -2.33243e-09 +/- 7.9468e-10
p6        = 6.6581e-13 +/- 3.05735e-12
p7        = 7.56393e-14 +/- 3.36902e-14
p8        = -9.30802e-18 +/- 4.90911e-17
p9        = -8.83265e-19 +/- 4.62862e-19
```

data test9.root
test10.root

cut condition
a1 > 80
a2 > 80

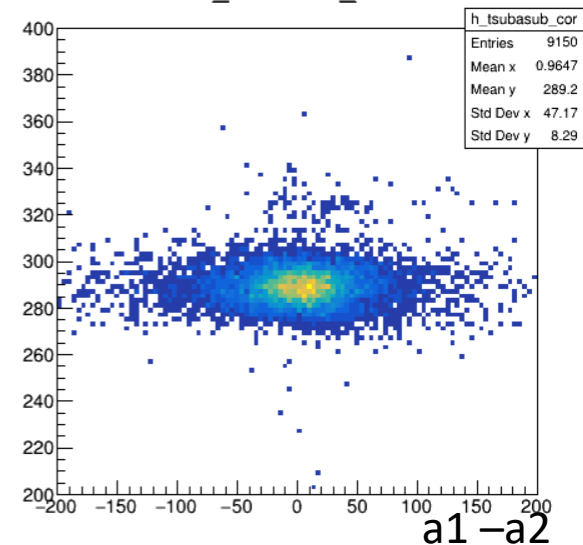
t1 -t2

h_tsubasub

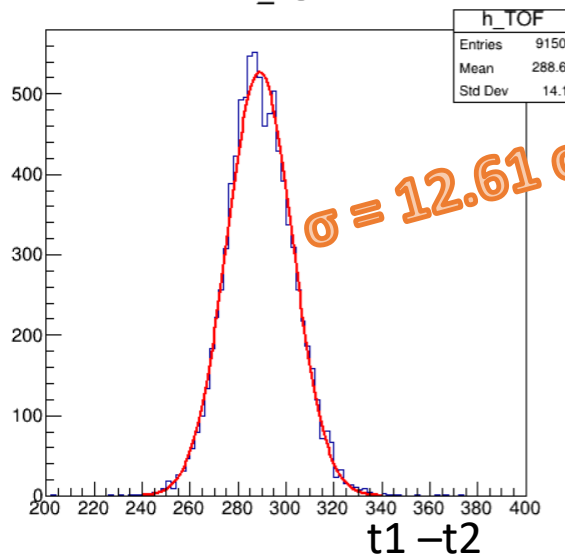


t1 -t2

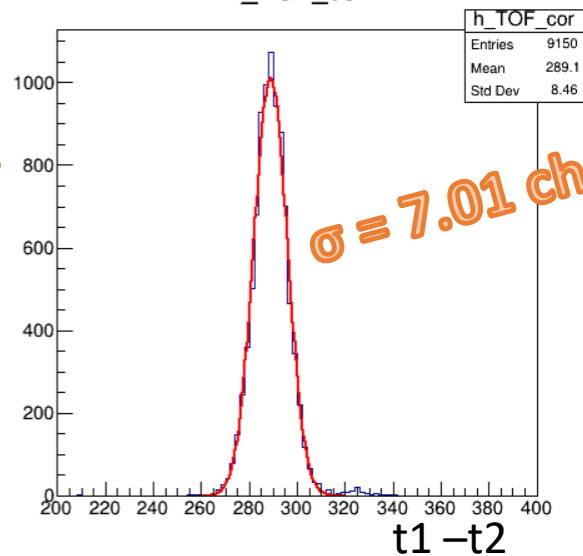
h_tsubasub_cor



h_TOF

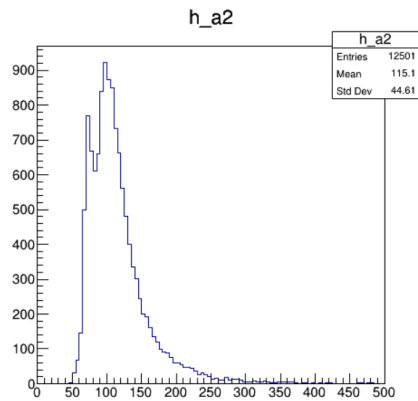
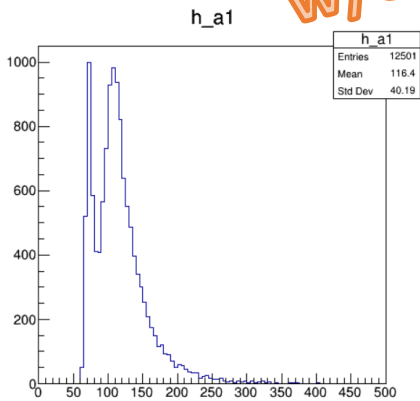


h_TOF_cor

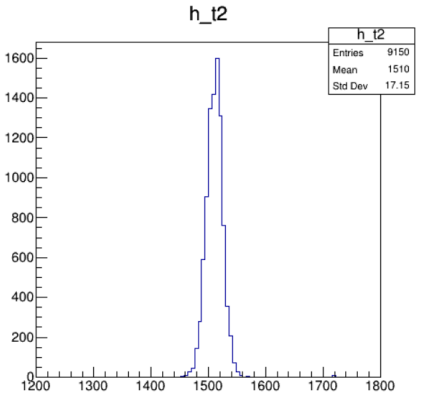
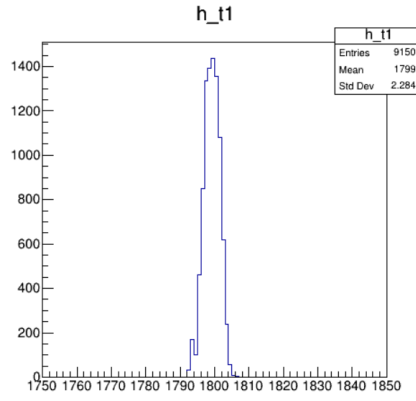
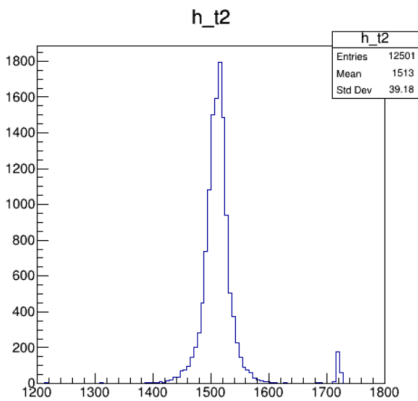
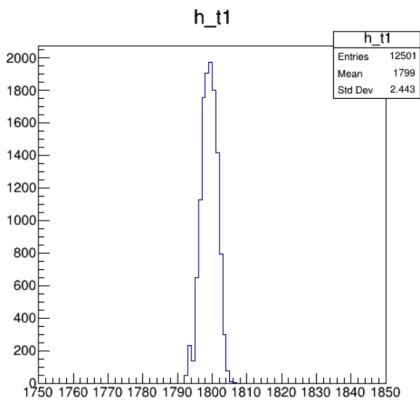
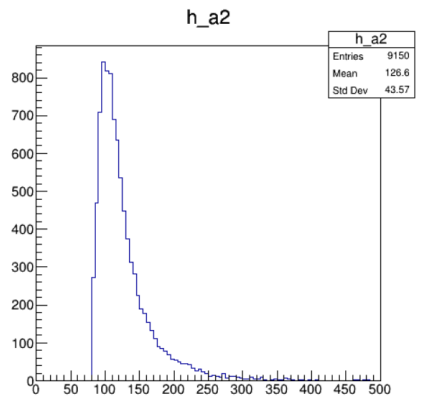
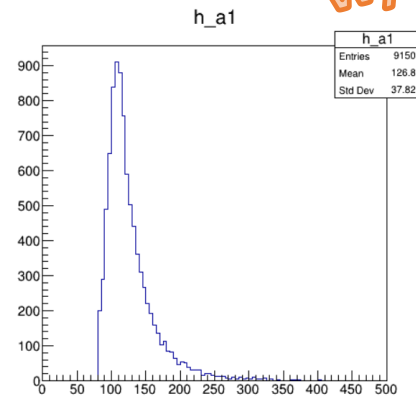


data (1D)

w/o cut

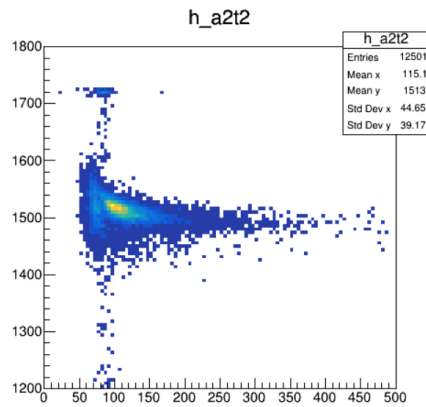
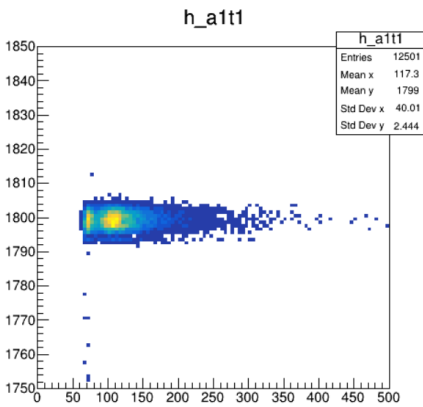
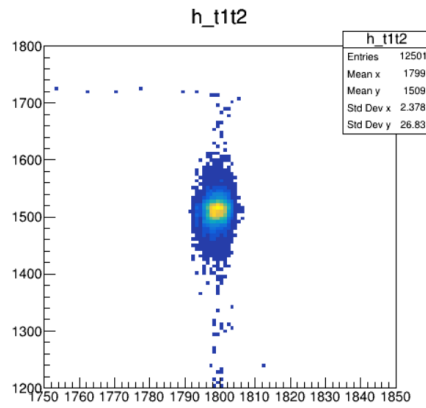
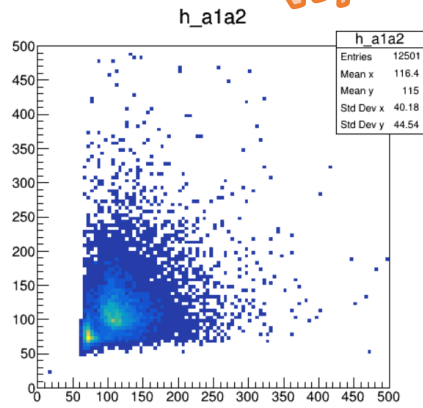


w/ cut



data (2D)

w/o cut



w/ cut

